

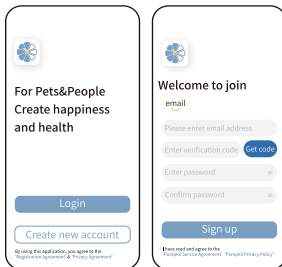
# Pumpkii Pet Camera Treat Dispenser BQ30: A Quick Guide

Scan the QR code or search 'Pumpkii' to download the app.



1

Register with your email.



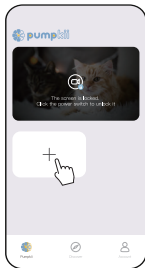
2

Turn on the device by pressing the back switch until you hear 'starting'.



3

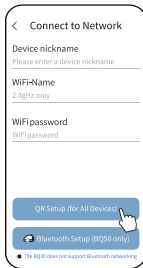
Tap '+' in the app to start pairing. You'll hear 'waiting for network configuration' as it searches for a Wi-Fi.



4

Name the device and connect via 2.4G Wi-Fi with name and password.

**Note: BQ30 does't support Bluetooth**



5

Place the Pumpkii app QR code 6 inches from the device.



6

Once 'connect network successfully' sound, tap 'Next'.



7

For pairing issues, reset by holding the bottom switch for 10 seconds until you hear 'restore factory setting' sound, enabling reconnection.



8

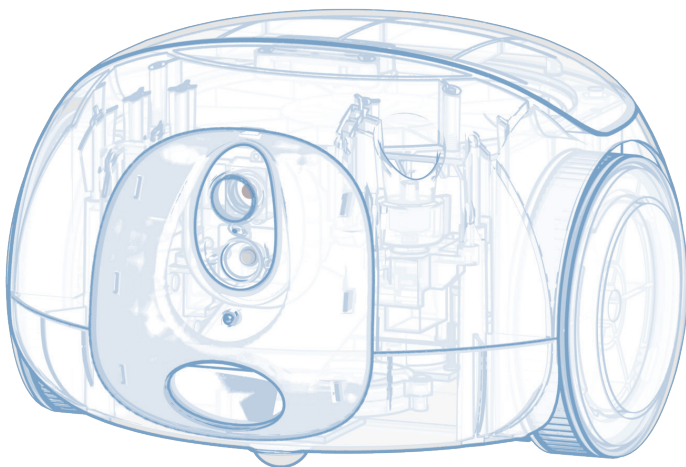
Check out the Pumpkii app for user manual, FAQ and customer service.

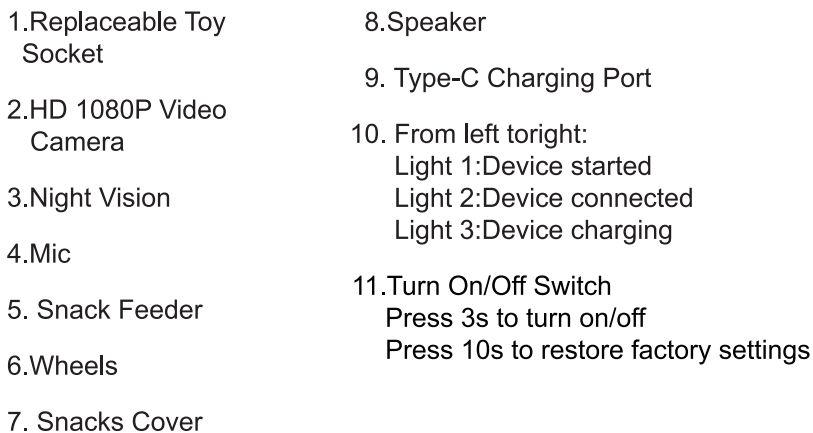
Website: [www.pumpkii.com](http://www.pumpkii.com), Email: [service@pumpkii.com](mailto:service@pumpkii.com), Tel: (872)903-4094

# Pumpkii Model BQ30

Pet Companion Robot

User Manual v1.2





## Packing List



1. Install the App



Download the Pumpkii app by scanning the QR code or searching for 'Pumpkii' on your App Store or Google Play.

2. Sign In

Register an account using your email, then log in to Pumpkii. Click '+', and follow the prompts to complete the initial pairing of your Pumpkii.

**Note: In the settings, grant Pumpkii access to Local Network and Camera, and enable Wireless Data usage for WLAN and Cellular Data.**




For Pets&People  
Create happiness  
and health

Login

Create new account

By using this application, you agree to the  
"Registration Agreement" & "Privacy Agreement"



Welcome to join

email

Please enter email address

Enter verification code


Get code

Enter password

Confirm password

Sign up

I have read and agree to the  
"Pumpkii Service Agreement" and "Pumpkii Privacy Policy"



Welcome to join

email

Please enter email address

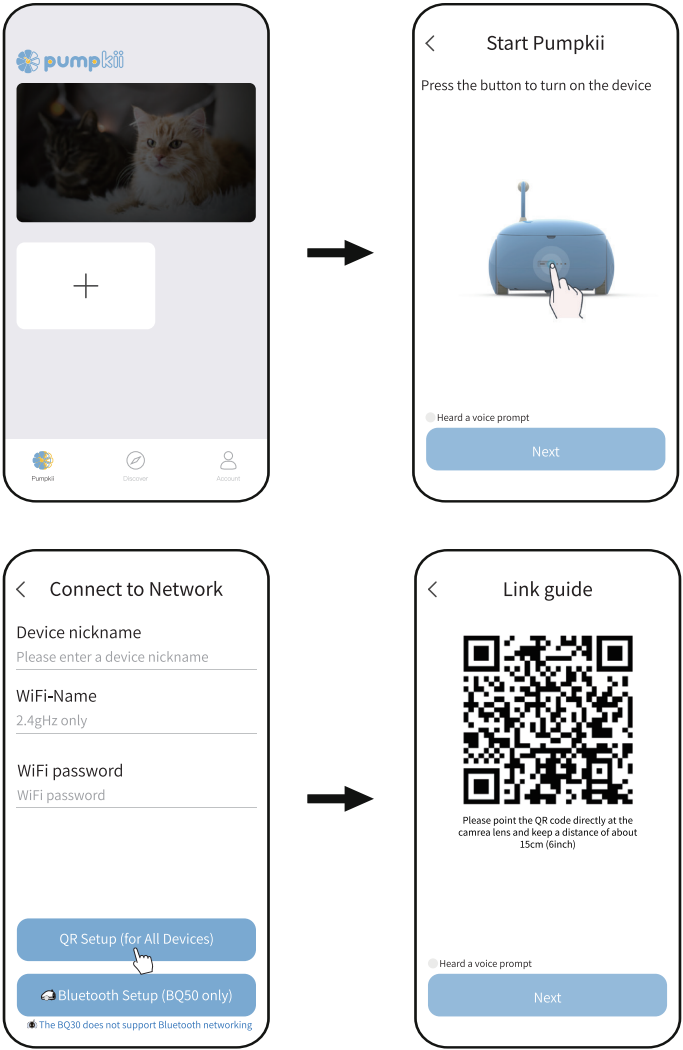
Enter password

Forgot password?

Login

I have read and agree to the  
"Pumpkii Service Agreement" and "Pumpkii Privacy Policy"

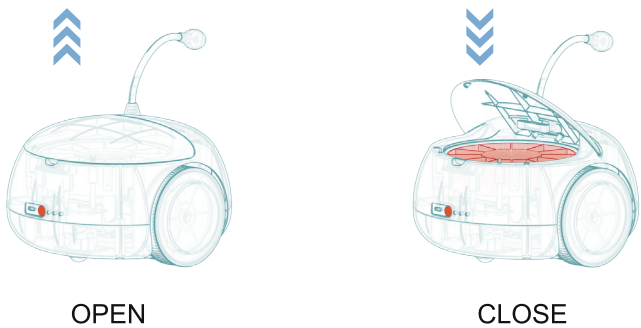
3. Connect to a 2.4G Wi-Fi Network



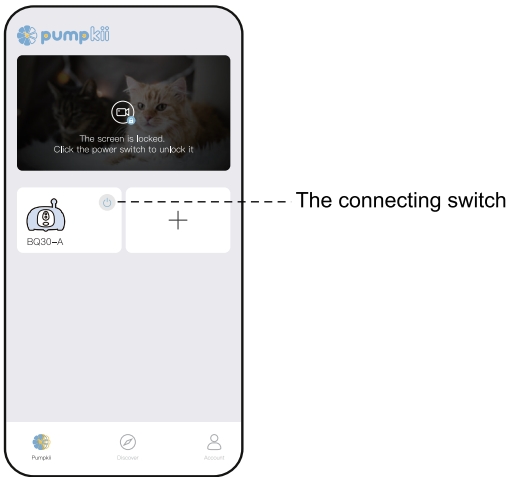
**Notes:** When connecting Pumpkii, ensure that your phone is connected to a 2.4G Wi-Fi network and setup the device with the 2.4G Wi-Fi name and password.

4. Load with Treats

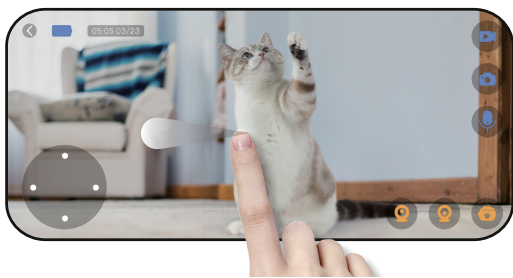
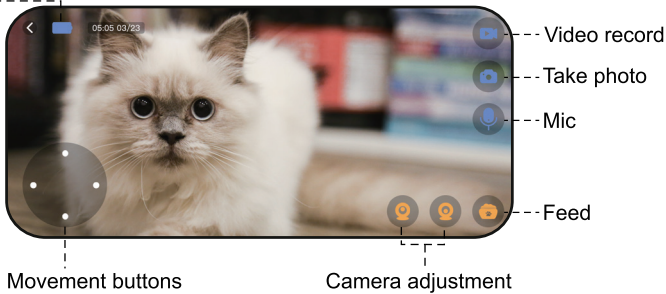
**Important: Load dry food only, as wet food is not suitable. The treat dispenser is designed to accommodate treats with sizes ranging from 0.2x0.2 to 0.6x0.6 inches.**



5. The Interface



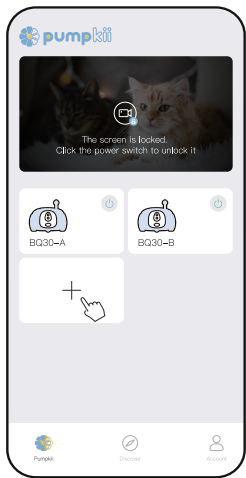
Battery Level -----



Swipe left or right on the screen to move the toy arm.

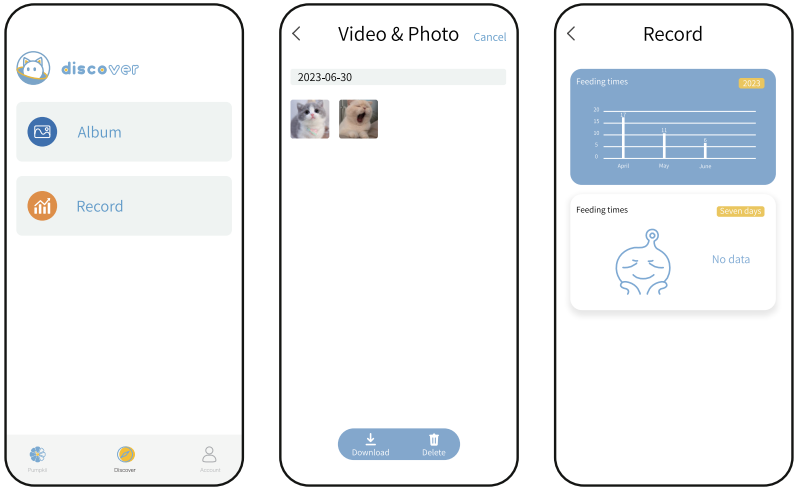
6. Pair Multiple Devices

Tap the '+' icon on the home page to add a device, then follow step 3 to complete the pairing process.



7. Discover

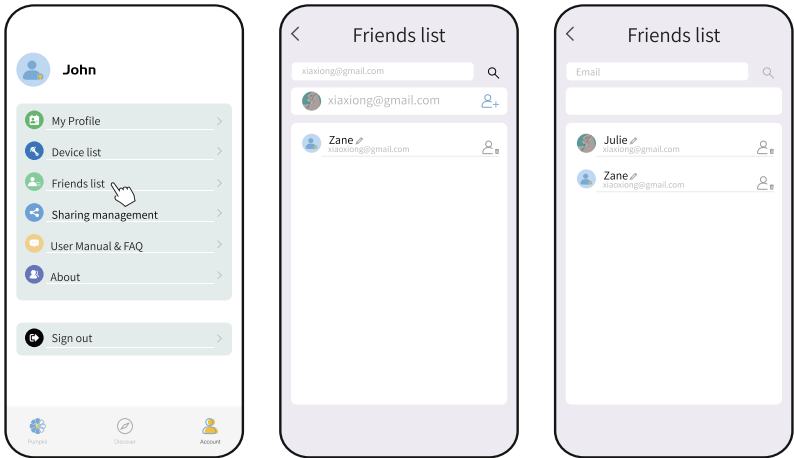
Pumpkii captures videos and photos that can be saved to your photo album for easy sharing with family and friends.



8. Add Friends

On your 'Account' page, tap 'Friends list' and search for their email addresses to add them to your friend list.

**Notes:** Please ensure that your friend is registered with the Pumpkii app.

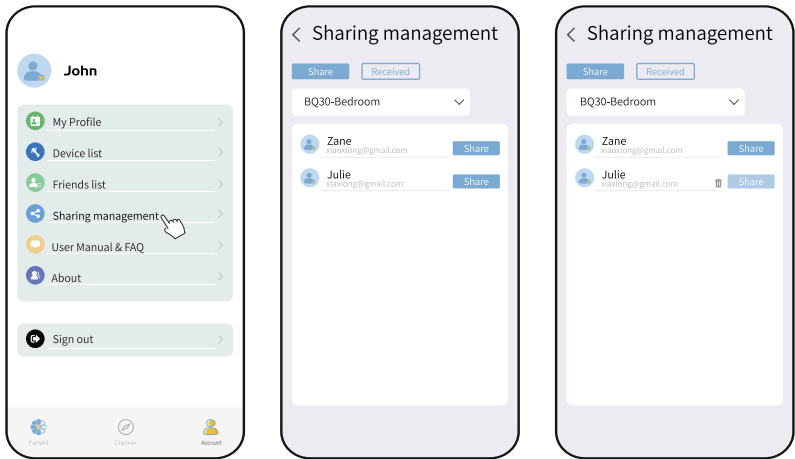




9. Share

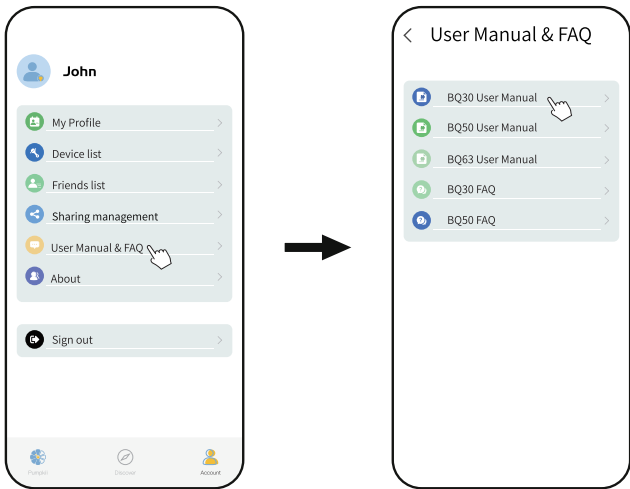
On your 'Account' page, tap 'Share' (on Android, tap 'To Share') to grant device control function to others.

**Note: Please ensure that the shared user is registered with the Pumpkii app.**



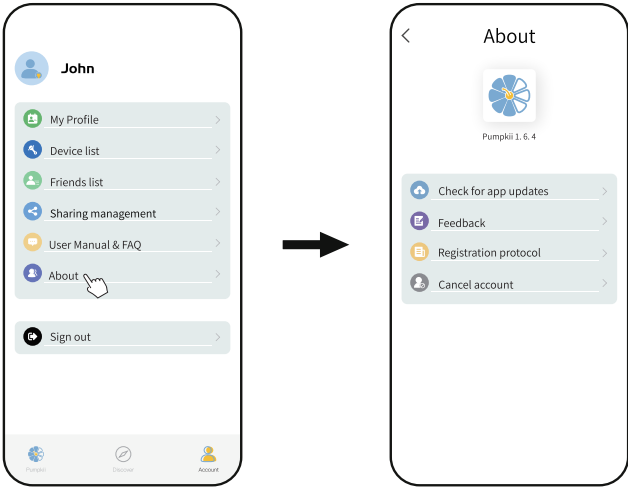
After successfully sharing, please confirm with your friend if the sharing was successful. You can delete the sharing when you don't want to share.

10. User Manual & FAQ



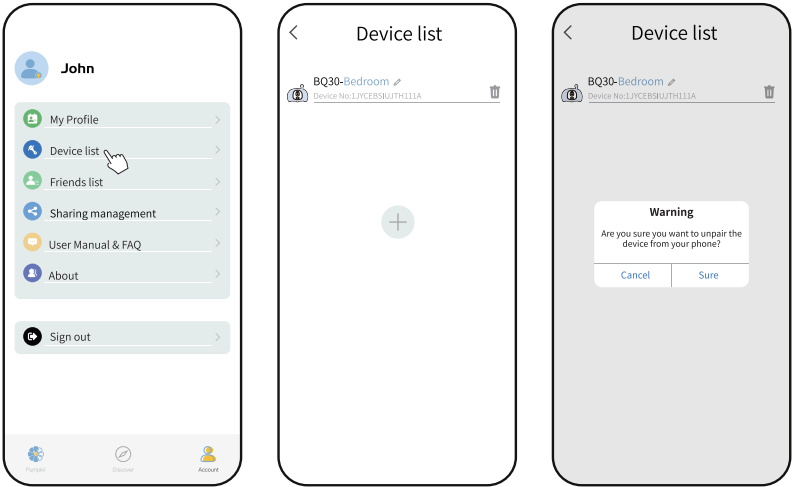
11. About

For software upgrades and any other issues, please don't hesitate to contact us.



12. Unpair

To unpair the device, tap 'Account' to access the 'Device list', then tap the '🗑️' icon next to the device. Confirming the unpairing by tapping 'Sure' in the warning prompt.



13. Restore Factory Settings

Hold down the switch located on the bottom for 10 seconds until you hear the 'restore factory setting, don't power off' sound prompt. This will allow you to reconnect your device again.



Please note

**2.4G Wi-Fi Compatibility:** Pumpkii is designed to work with 2.4GHz Wi-Fi networks. With a regular single router, you can usually see two IDs, 2.4G and 5G. Please connect to the 2.4G network. Most mesh routers are compatible with 2.4G, although some may require splitting the 2.4G and 5G networks. For more information regarding FAQs on mesh router compatibility, please visit our website at [www.pumpkii.com](http://www.pumpkii.com).

