

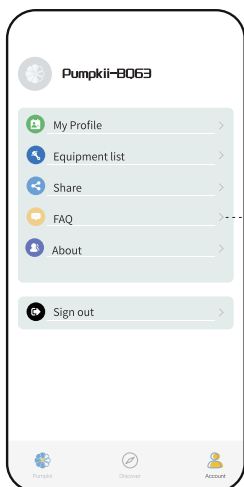
# Pumpkii Pet Feeder BQ 63: A Quick Start Guide

1. Plug the power cable and charge your feeder.
2. Scan the QR code below or search for 'Pumpkii' on you App Store or Google Play and download the Pumpkii app.



3. Register an account with your email and log in to your account.
4. Tap the '+' icon on your Pumpkii app to add the feeder.
5. Name your feeder, and setup the feeder with 2.4G Wi-Fi name and password to generate a QR code.
6. Turn on the feeder and you will see the green light blinking. If the green light is not blinking, press and hold the 'SET' button of the feeder for more than 8 seconds. After you release the button, you will hear a 'Di...Dong...' sound. Then wait for another 20 seconds until you see the green light blinking, and then go to the next step.
7. Put your phone about 6 inches in front of the feeder's camera, and scan the QR code.
8. After you hear a 'Di' sound prompt, the pairing is successful. Tap 'Next' and you will see the video interface.

Check out the 'Account' in your Pumpkii app for user manual, FAQ and customer service. Contact us for further assistance.

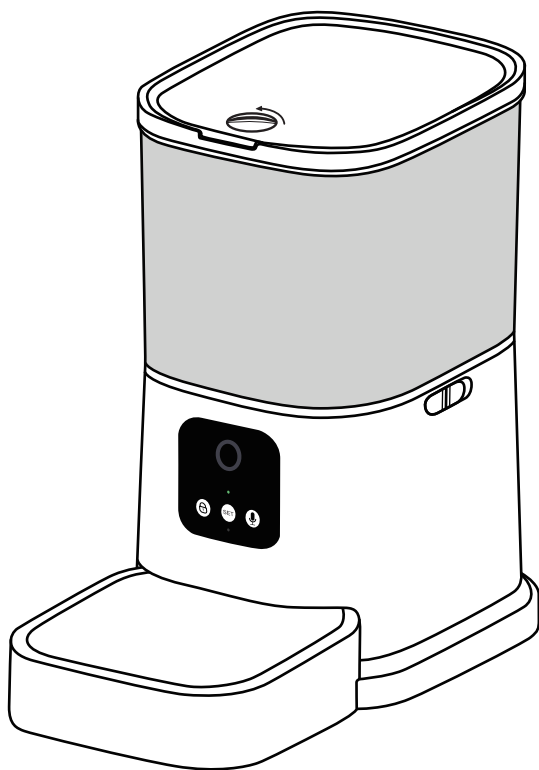


Open the manual for more details about how to use the feeder.

# Pumpkii Model BQ63

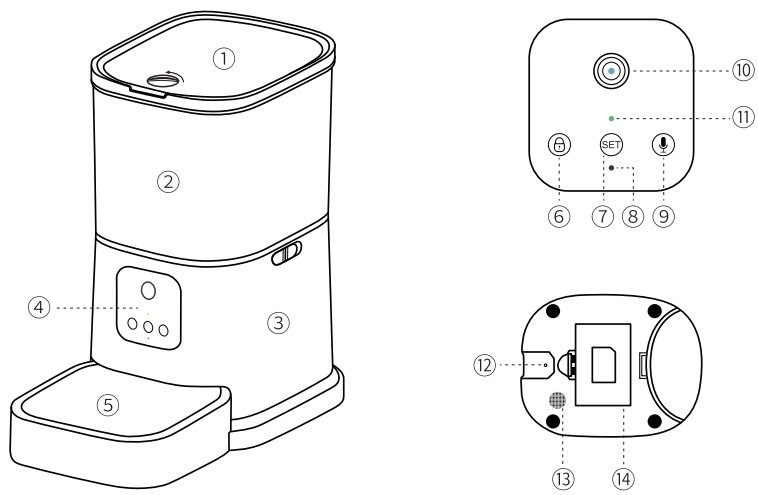
Pet Feeder

User Guide V1.1





Specification



1. Lid

2. Food Container

3. Feeder Body

4. Control Panel

5. Feeding Tray

6. Lock Button
  - Press and hold for 5 seconds to lock the control panel (the red light blinked twice)
  - Press and hold for another 5 seconds to unlock it (the red light blinked twice again)
  - Short press to manually feed while the control panel is unlocked
7. SET Button
  - Long press to reset to factory settings (The indicating light blinked fast)

8. Mic

9. Recording Button

10. HD Camera

11. Indicating Light

12. Power Socket

13. Speaker

14. Battery Compartment
  - Fits 3pcs of D batteries as backup

Packing List



Pet feeder



Power Cord



Quick Guide

1. Install the App

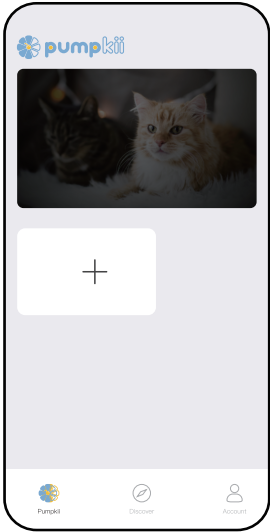


Scan the QR code above or search for 'Pumpkii' on your App Store or Google Play and download the Pumpkii app.

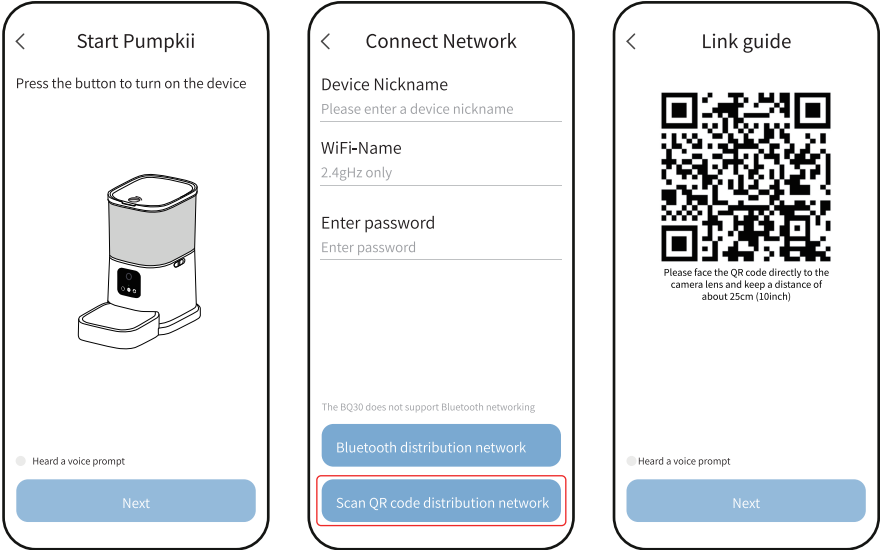
2. Sign in

Use your email to register for an account, then turn on the pet feeder, log in to the account, clock '+' and follow the app prompts to complete the first time pairing of your pet feeder.

**Note:** In the settings, allow Pumpkii to access Local Network and Camera, and allow Wireless Data to use WLAN & Cellular Data.

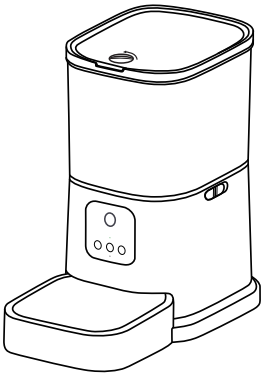


3. Connet your pet feeder with 2.4GHz Wi-Fi



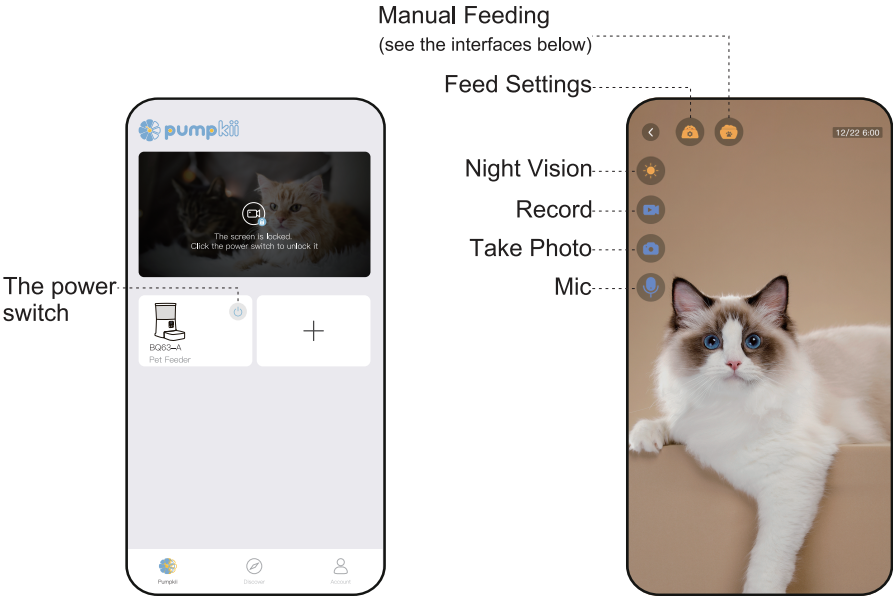
**Note: When you connect the pet feeder, connect your phone with 2.4G Wi-Fi and setup the device with 2.4G Wi-Fi name and password.**

4. Fill the feeder with dry food

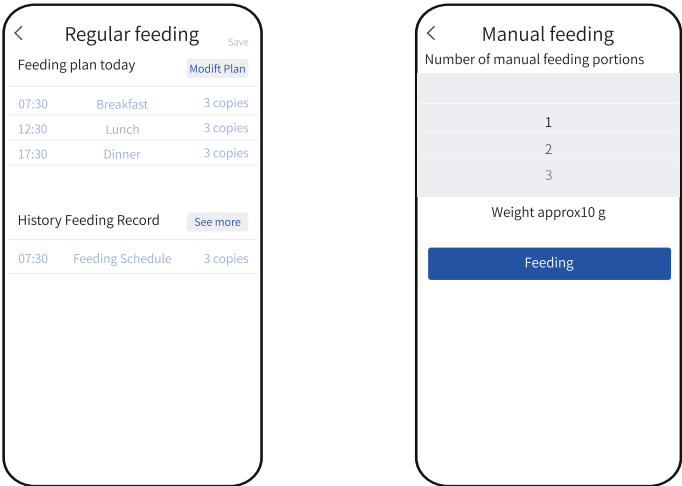


**Note: Do not load with wet food, it is recommended to use dry food only. The treat dispenser can hold treats in sizes between 0.2x0.2 and 0.6x0.6 inches.**

5. The interface



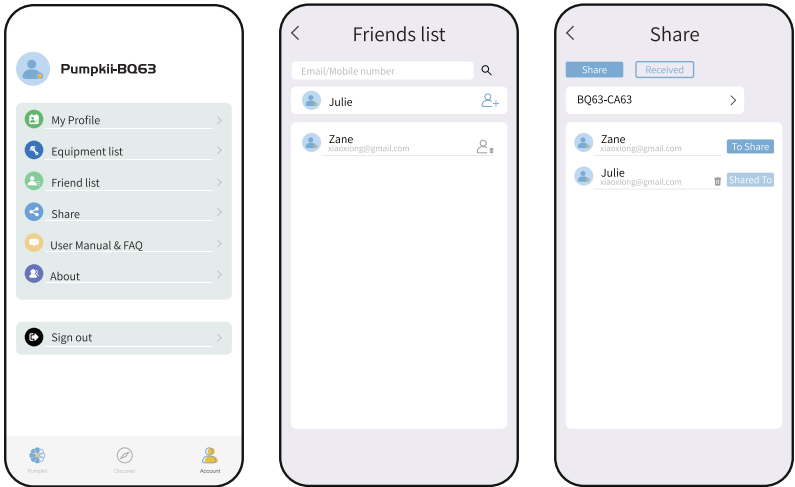
Tap the power switch to unlock the screen



6. Share

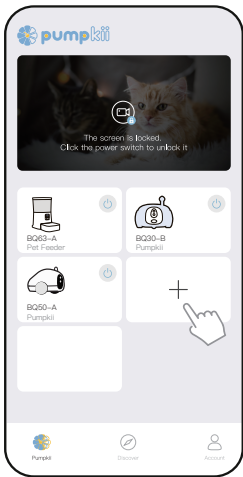
Click 'Share' on your 'Account' page to share the device control function with your friends.

**Note: Ensure that the shared user is registered with Pumpkii app. Add your friend before sharing.**



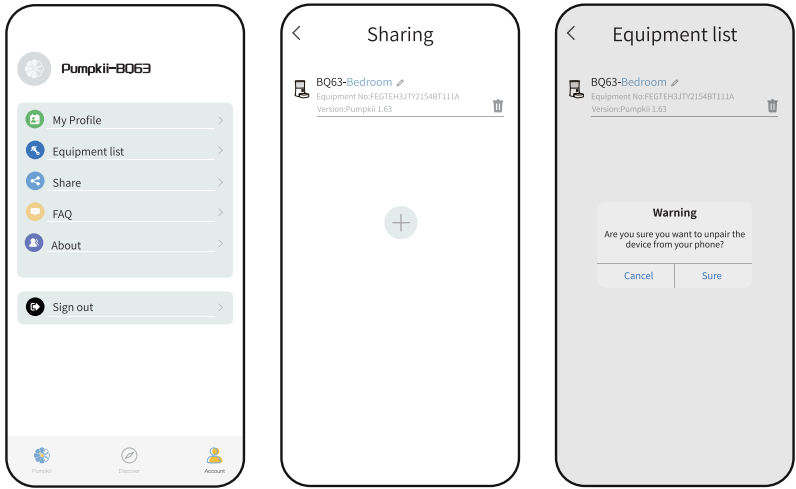
7.Pair Multiple Devices

Click the add device icon '+' in the middle of the home page, and follow step 3 to complete the pairing process.



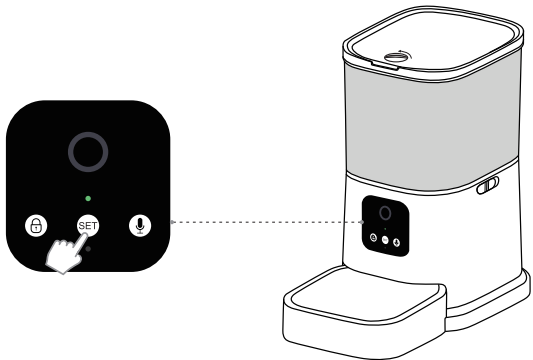
8. Unpair

Click the 'Account' to access the 'Equipment list', then tap 'Unpair' icon of the device. Tap 'Sure' to confirm unpairing in the warning prompt.



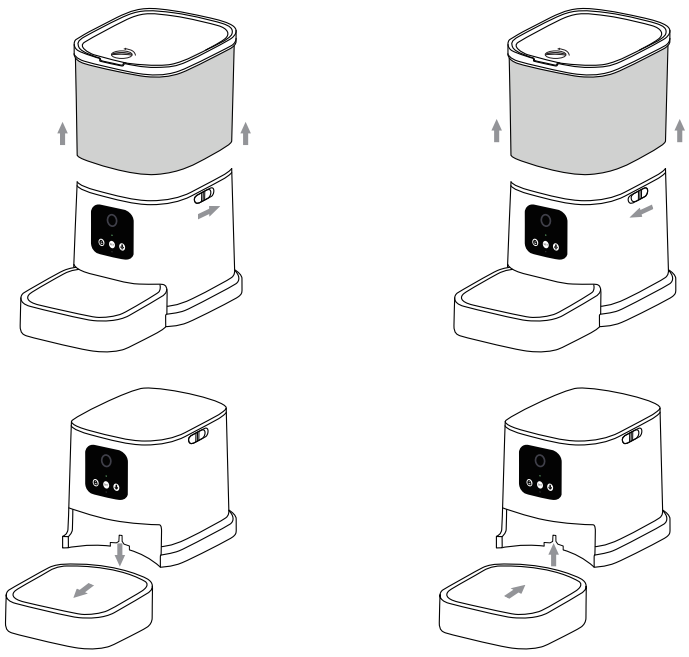
9. Restore Factory settings

Press and hold the 'SET' button for more than 8 seconds. After you release the button, you will hear a 'Di...Dong...' sound. Then wait for another 20 seconds until you see the green light blinking, and then go to the next step.



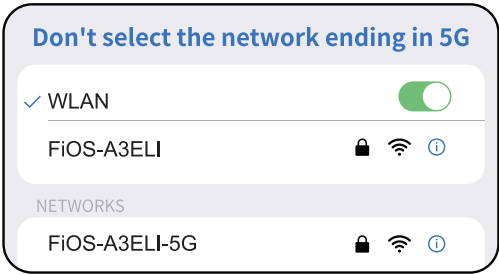
10. Assemble,Disassemble and Maintenance

Follow the instructions below to assemble and disassemble the feeder. The lid, food container and feeding tray are dishwasher safe. NEVER wash the feeder body, but wipe it with cleaning cloth.



Please note

Pumpkii pet feeder currently only supports 2.4GHz WiFi connections, if you have a 5GHz router your network will be incompatible with Pumpkii. If you have a dual router that supports both 2.4GHz and 5GHz networks you must split your bands to have two separate SSID networks and connect to the 2.4GHZ SSID Wifi network and not the one ending in '5G' when setting up Pumpkii. (You may need to contact your router or internet provider for further support)



**Method 1 (Log out and Log in)**

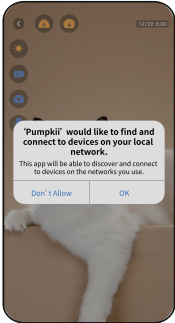
If you were able to connect to the feeder previously or have issues pairing, check to see your app is the latest version from the App Store, log out of your Pumpkii account, and log back in to refresh your account.

**Method 2 (Factory Reset)**

If your problem still persists try to reset your feeder to factory settings by holding the SET button until you see the green indicating light brinking for a successful reset and you can pair your device again.

**Method 3 (Allow Permissions)**

When you install and run the Pumpkii App for the first time, please make sure you have allowed Pumpkii App to access your local network, camera, and other features. Not allowing these features won't grant the app the proper permissions and you will have issues with setting up or using features such as taking photos and video. (If you are still having trouble please contact us for further assistance!)





## Contact Us

Website: [www.pumpkii.com](http://www.pumpkii.com)

Email: [service@pumpkii.com](mailto:service@pumpkii.com)

Tel: (872)903-4094